

**CITYRANGE**<sup>®</sup>

# CR-350Ri

**PREMIUM**<sup>®</sup>  
Rougher



[www.rivertekservices.com](http://www.rivertekservices.com)

**KATO**



**CITYRANGE**

**CR-350Ri**

**PREMIUM**  
Rougher



# Magic Reach!

**More Power and Versatility**  
**35 Ton City Crane**

## **NEW Economical 35ton Crane Boasts:**

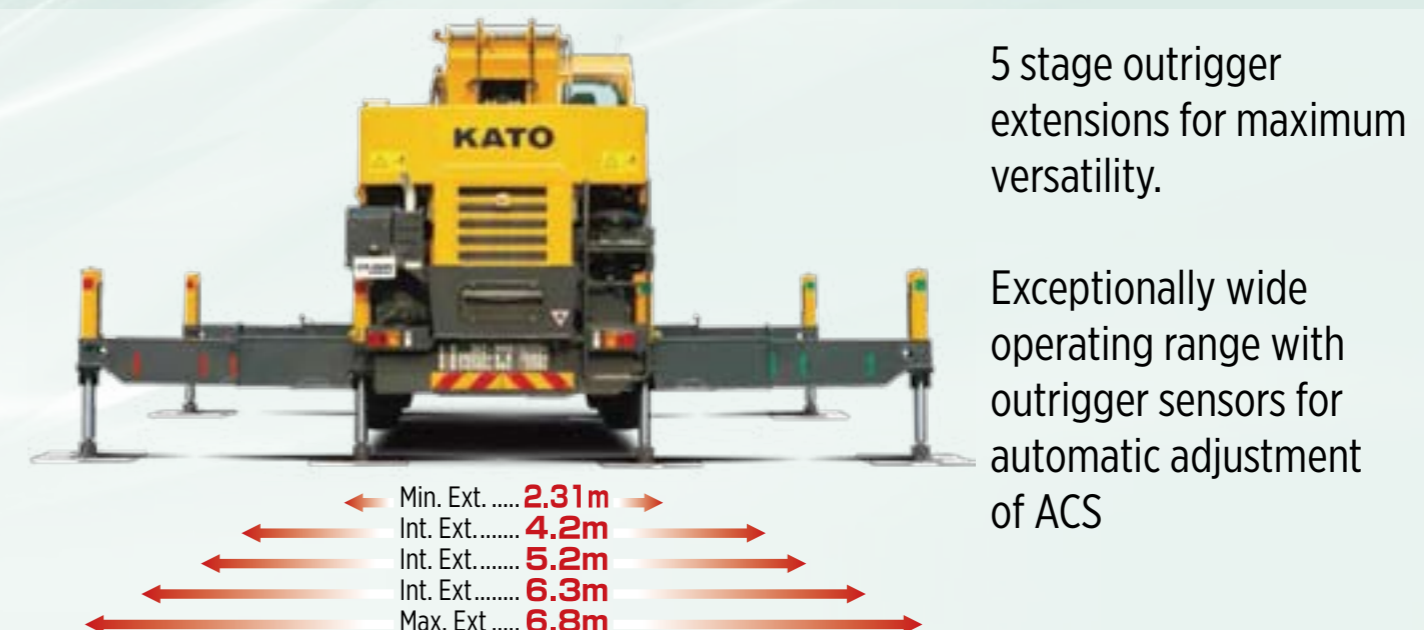
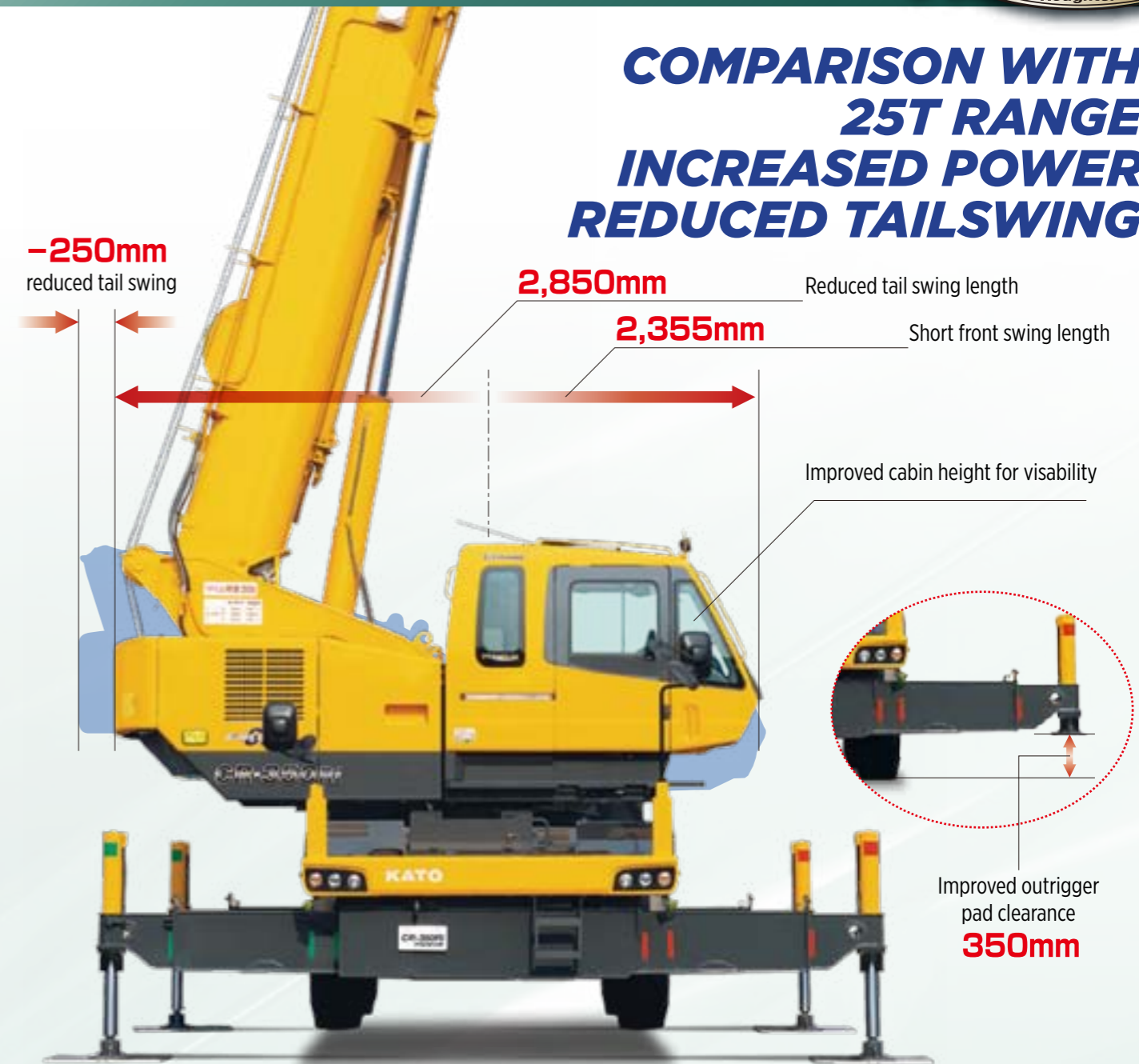
- ▶ 32.5 Meter, 6 section rounded shape SuperBoom
- ▶ 6.5 Meter - 14 Meter Fully Hydraulic Fly Jib, Hydraulically Telescoping & Hydraulically Luffing (including under load)
- ▶ Outrigger Sensors with 5 Outrigger settings with SLI automatic Adjustment
  - ▶ Wide working range in narrow spaces
  - ▶ Greater operator comfort
- ▶ Superior and Innovative technology
  - ▶ Low owning and operating cost
  - ▶ High safety level in operation
  - ▶ More overall productivity
- ▶ Fast, versatile, strong, durable

**CLOSER, HIGHER, FURTHER, HEAVIER**

[www.rivertekservices.com](http://www.rivertekservices.com)



**COMPARISON WITH 25T RANGE INCREASED POWER, REDUCED TAILSWING**



5 stage outrigger extensions for maximum versatility.

Exceptionally wide operating range with outrigger sensors for automatic adjustment of ACS

# Magic Reach!



6 stage 32.5m Superboom, Power that won't quit

**Boom Lifting Capacity SUPERBOOM**

Maximum Lift Capacity .....	<b>35t × 2.6m</b>
Boom Length .....	<b>7.5m~32.5m</b>
Max. Lifting Height.....	<b>33.4m</b> (Main Boom)
Boom Derricking Angle.....	<b>-10°~83°</b>

**Hydraulic 3 Stage Super Luffing Fly Jib SL POWER/VERSATILITY SUPER LUFFING**

Maximum Lift Capacity .....	<b>3.2t × 76°</b>
Jib Length.....	<b>6.5m~14m</b>
Jib Offset Angle.....	<b>5°(7°)~60°</b>
Max. Lifting Height.....	<b>47.3m</b> (SL Fly Jib)



# Intelligent Cabin

New model ACS (Automatic Crane System) Compuload  
 ■ Equipped with slewing automatic stop switch



- Easy operation using the latest touch panel colour display
- The hook travel distance is displayed, enabling use in a wide range of conditions
- The working range limiting function can be set using values
- Proven KATO reliability



### IC Card System

- Anti-theft function
- Crane running data
- Daily reports
- Connect to PC for daily reporting



Multi view/ Multi camera display monitor for advanced awareness/ safety.



▲ Spacious, ergonomic operator working area to reduce fatigue

# Progressive Parts

- ▲ Safety wheel blocks
- ▲ Xenon headlights
- ▲ Front step
- ▲ Working lights
- ▲ Tool box
- ▲ External working mode alert
- ▲ Rear wheel position lights
- ▲ Side view camera (optional)
- ▲ Extra storage
- ▲ Aluminium O/R Pads.
- ▲ Front Camera (Optional)
- ▲ Winch maintenance inspection point
- ▲ Rear view camera (optional)

### New Mitsubishi 6M60-TLE3BA, Turbo charged Common rail diesel engine

- Easy access for maintenance and servicing
- Tier 4 Interim/EURO Stage III compliant. Flexibility approved to October 2017

Designed for the future **KATO**

Max. Output .... **200kW / 2,600min<sup>-1</sup>**  
 Max. Torque..... **775N•m / 1,600min<sup>-1</sup>**

These specifications are subject to change without notice. Illustrations and photos show the standard models, and may or may not include optional equipment, accessories, and all standard equipment with some differences in colour and features. Before use, read and understand the Operator's Manual for proper operation. Standard and optional equipment may vary by country, so please consult your KATO dealer for details.





**GR-350Ri**  
**PREMIUM**  
Rougher®

**GR-350Ri**



**Authorised Distributor**

**Rivertek Services Ltd.**

Coolowen, Blarney, Co. Cork, Ireland.

Phone: 021 4385342/4381314 Fax: 021 4381504

Email: [info@rivertekservices.com](mailto:info@rivertekservices.com) Website: [www.rivertekservices.com](http://www.rivertekservices.com)

